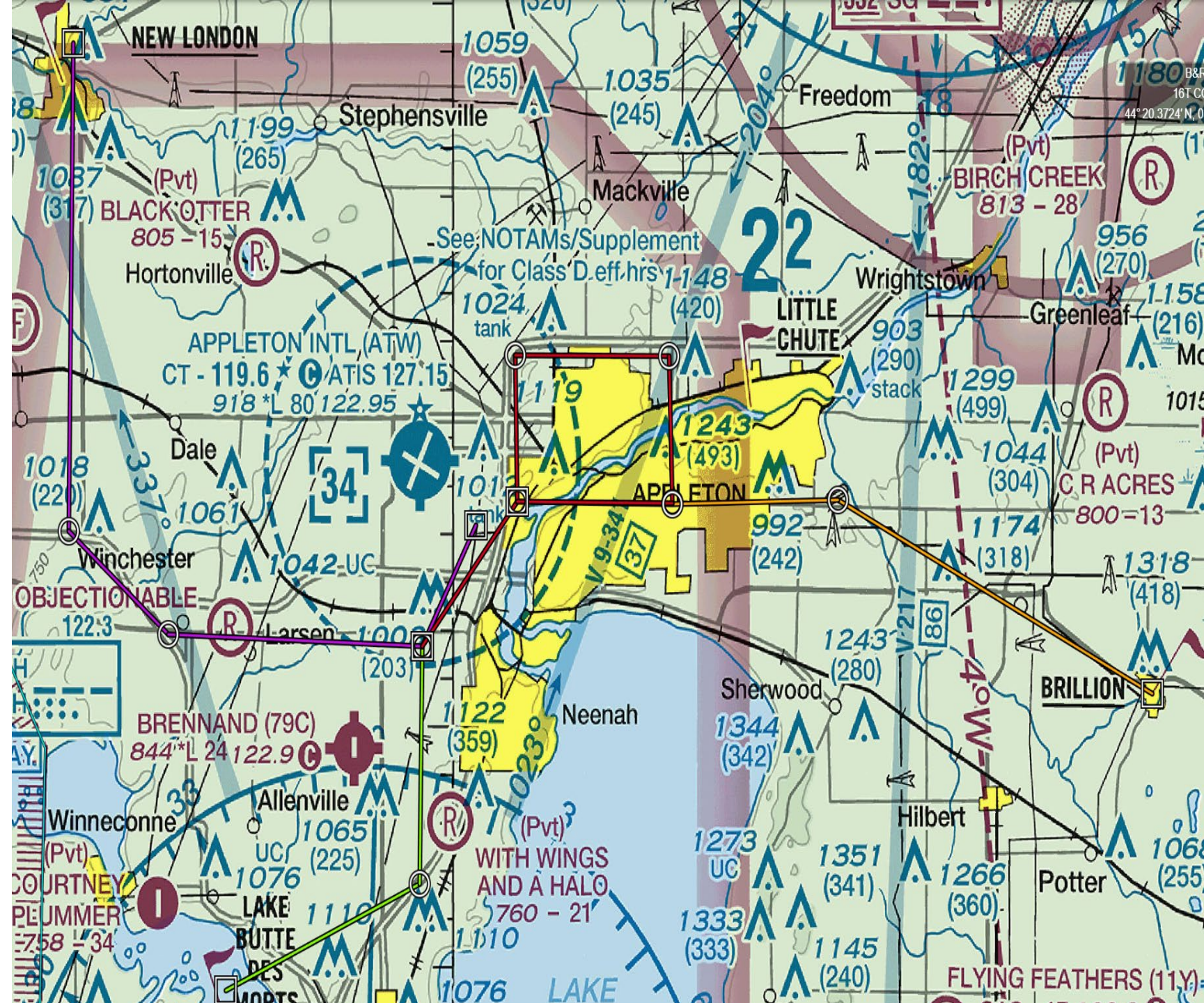


KATW EAA VFR ARRIVAL ROUTES AND HOLDING PATTERN

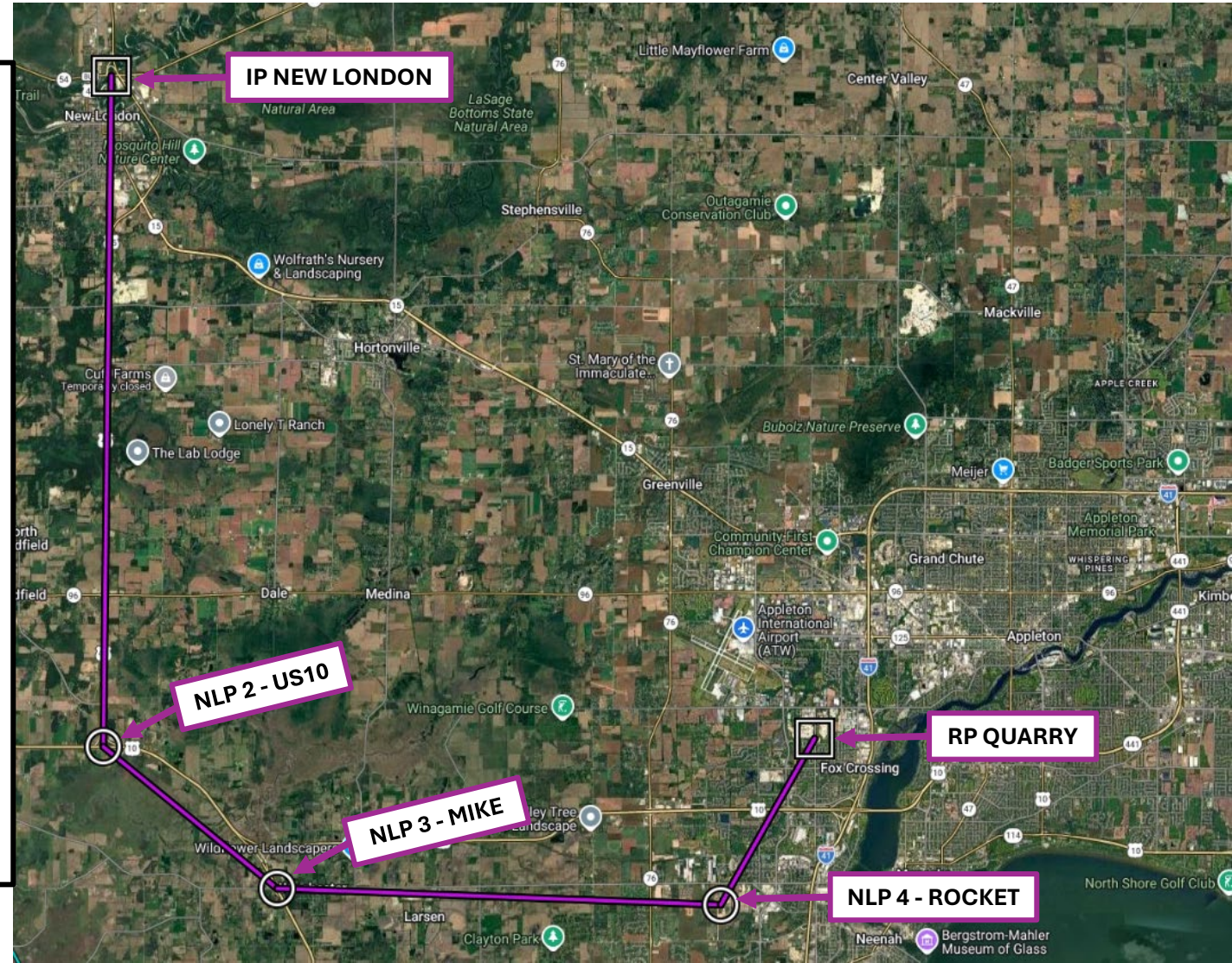


KATW NEW LONDON ARRIVAL

POINT LAT/LONG & HEADINGS

NEW LONDON ARRIVAL POINTS

- INITIAL POINT – New London (“NEW LONDON”)
 - LAT/LONG: 44° 24.1770’N / 088° 44.2072’W
 - HEADING 185° to NLP 2
- NLP 2 – US10/US45 Intersection (“US10”)
 - LAT/LONG: 44° 14.0510’N / 088° 44.3747’W
 - HEADING 135° to NLP 3
- NLP 3 – US45/County Road M Intersection (“MIKE”)
 - LAT/LONG: 44° 11.9129’N / 088° 40.6573’W
 - HEADING 095° to NLP 4
- NLP 4 – Neenah HS Rocket Field (“ROCKET”)
 - LAT/LONG: 44° 11.6669’N / 088° 31.1397’W
 - HEADING 030° to RP
- RELEASE POINT – Curtis Quarry (“QUARRY”)
 - LAT/LONG: 44° 14.1765’N / 088° 29.1342’W



KATW LAKE BUTTE DES MORTS ARRIVAL

POINT LAT/LONG & HEADINGS

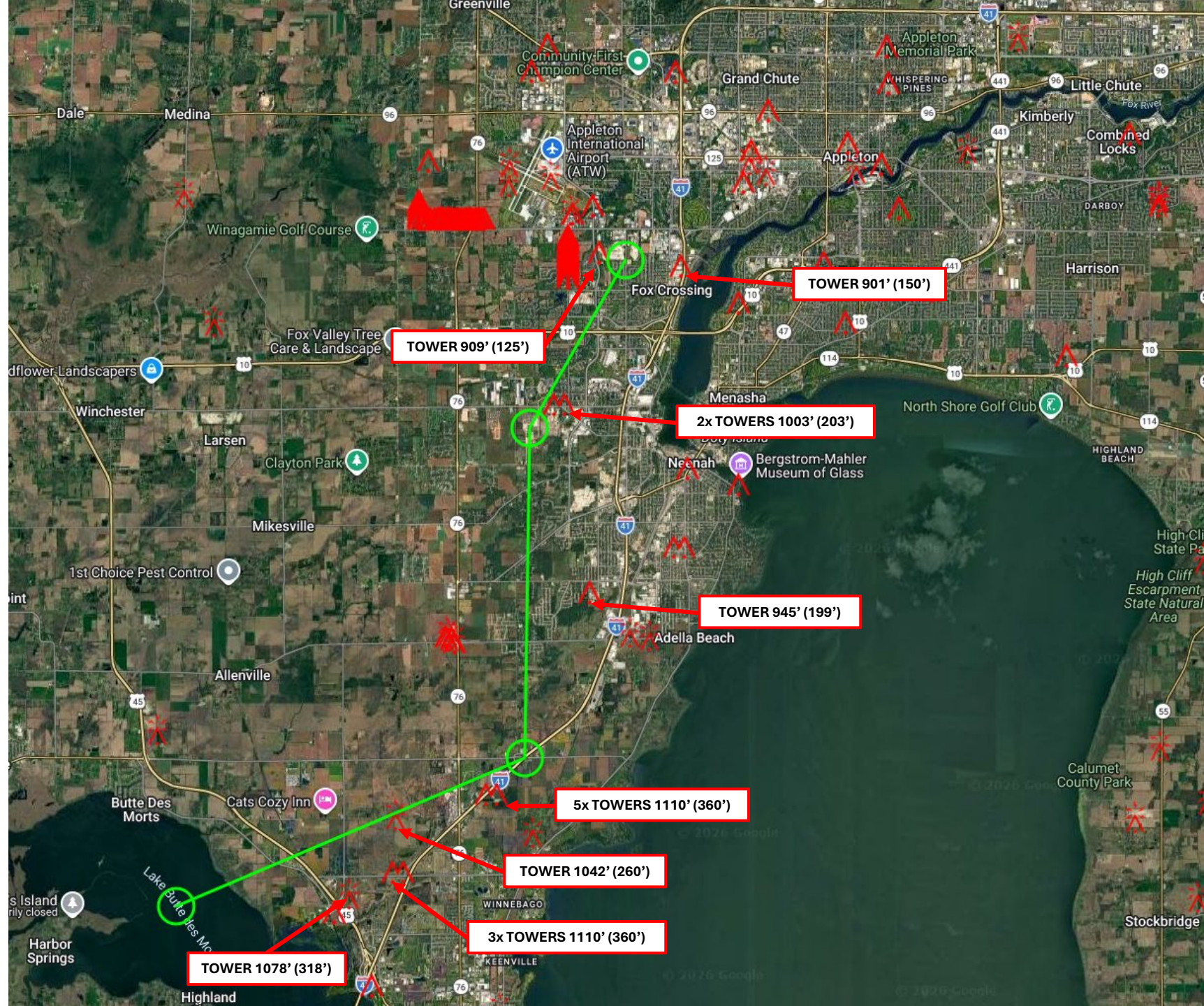
LAKE BUTTE DES MORTS ARRIVAL POINTS

- INITIAL POINT – Lake Butte Des Morts (“BUTTE”)
 - LAT/LONG: 44° 04.5151’N / 088° 38.4990’W
 - HEADING 070° to LBP 2
- LBP 2 – I-41/County Road GG (“GG”)
 - LAT/LONG: 44° 06.7379’N / 088° 31.2457’W
 - HEADING 005° to LBP 3
- LBP 3 – Neenah HS Rocket Field (“ROCKET”)
 - LAT/LONG: 44° 11.6669’N / 088° 31.1397’W
 - HEADING 030° to RP QUARRY
- RELEASE POINT – Curtis Quarry (“QUARRY”)
 - LAT/LONG: 44° 14.1765’N / 088° 29.1342’W



KATW LAKE BUTTE DES MORTS ARRIVAL

OBSTACLES WITHIN 1NM OF ROUTE



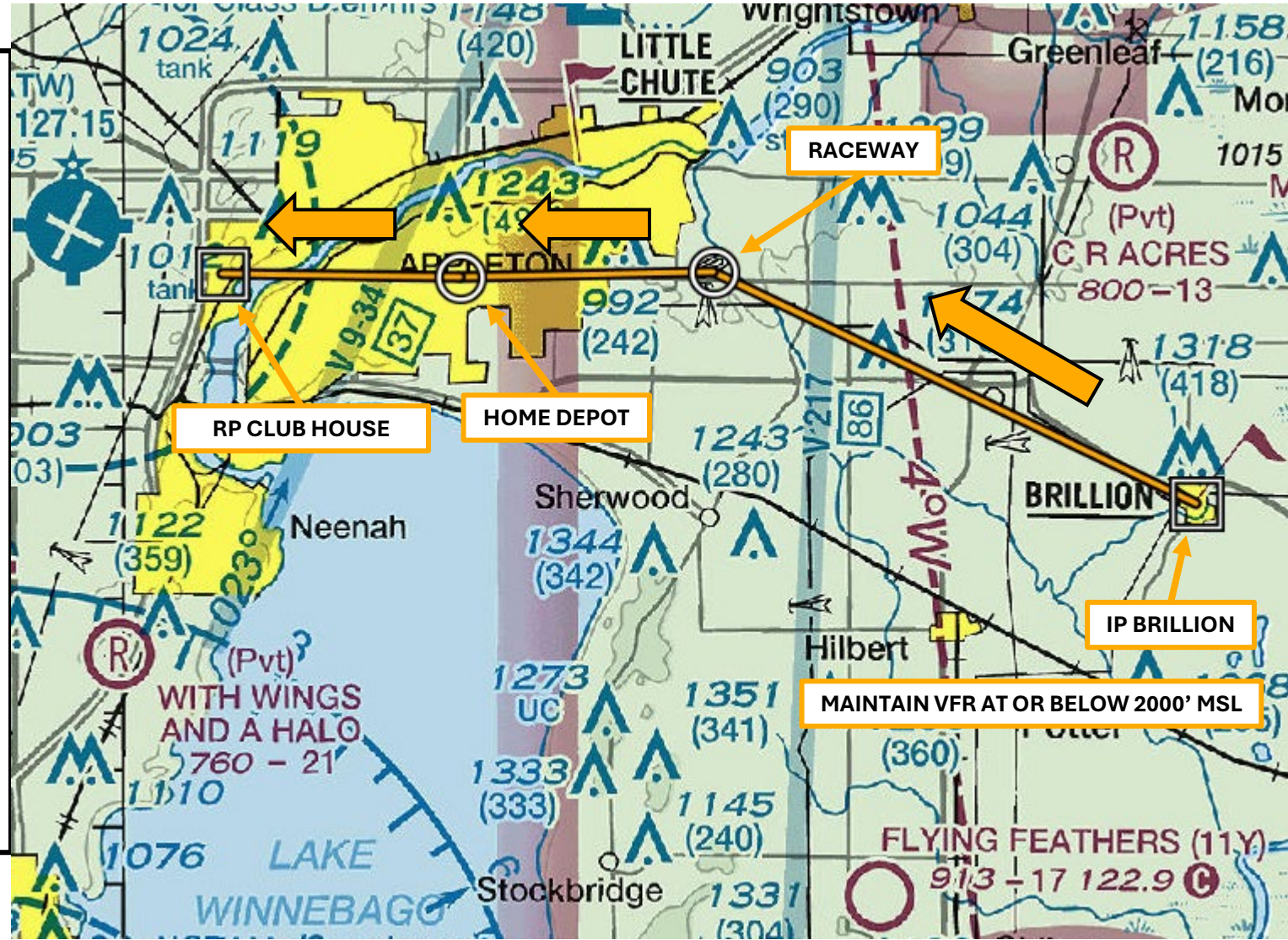
KATW BRILLION ARRIVAL

ARRIVAL INSTRUCTIONS

CALL ATW TOWER ON 119.6 AT BRILLION

1. From **BRILLION** fly suggested heading 300 for approximately 9.4 NM until you reach the Wisconsin International Raceway (“**RACEWAY**”).
2. Report **RACEWAY** inbound.
3. At **RACEWAY** maintain **VFR at or below 2000’ MSL**.
4. From **RACEWAY** fly a suggested heading 270 to HWY 441 and Calumet Rd intersection (“**HOME DEPOT**”) for approximately 4.4 NM. This joins the VFR Holding Pattern when requested.
5. From **HOME DEPOT** fly suggested heading 275 to the Golf Course Country Club (“**CLUB HOUSE**”). This makes for a Right dogleg to final for RWY 30.

Expect possible holding over **BRILLION** and **RACEWAY**.
Listen carefully for follow-up instructions from ATW Tower at all times.

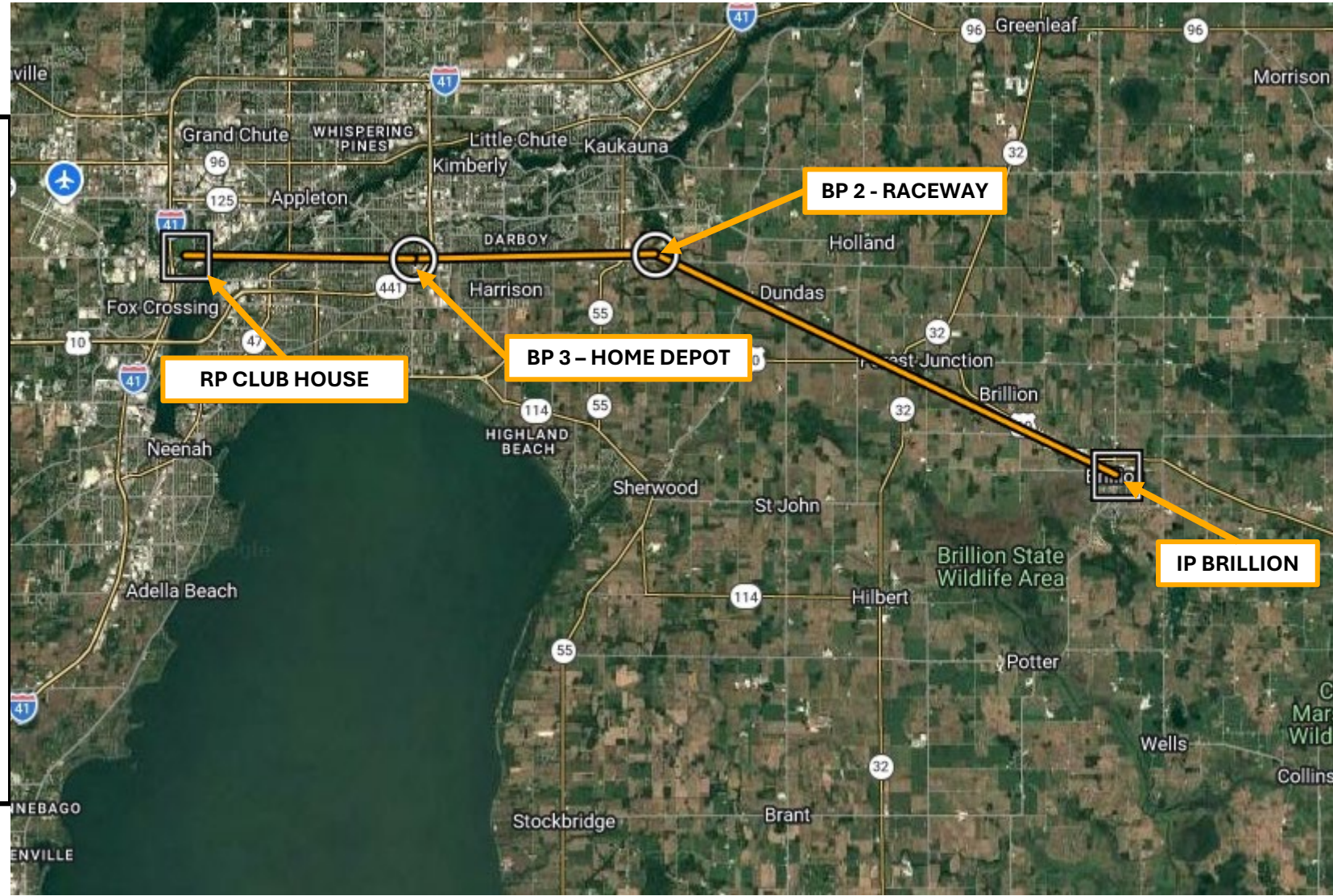


KATW BRILLION ARRIVAL

POINT LAT/LONG & HEADINGS

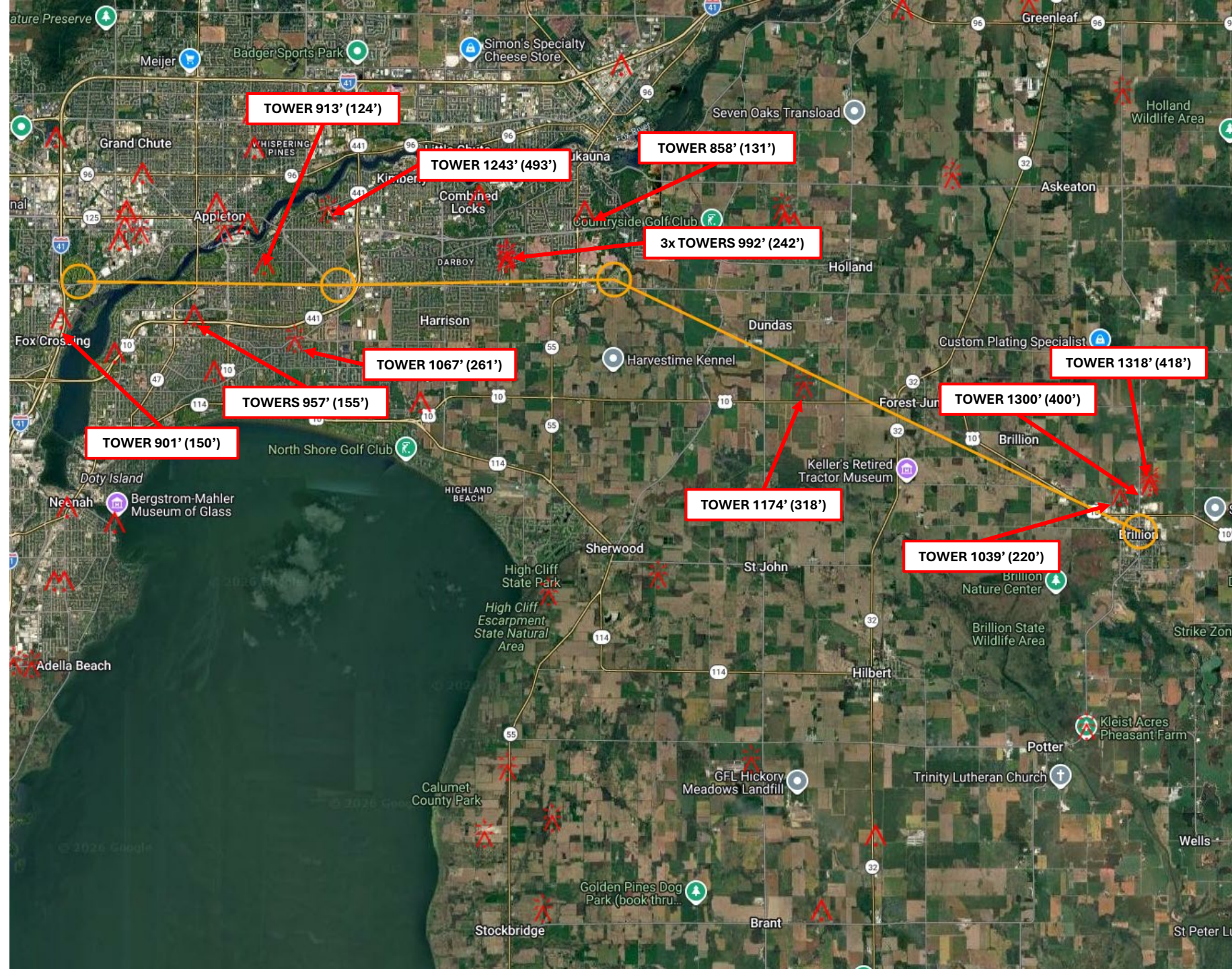
BRILLION ARRIVAL POINTS

- INITIAL POINT – Brillion (“BRILLION”)
 - LAT/LONG: 44° 10.6809’N / 088° 03.8303’W
 - HEADING 300° to BP 2
- BP 2 – Wisconsin International Raceway (“RACEWAY”)
 - LAT/LONG: 44° 14.7108’N / 088° 15.6025’W
 - HEADING 270° to BP 3
- BP 3 – HWY 441 / Calumet (“HOME DEPOT”)
 - LAT/LONG: 44° 14.6290’N / 088° 21.7867’W
 - HEADING 275° to RP Club House
- RELEASE POINT – Golf Course (“CLUB HOUSE”)
 - LAT/LONG: 44° 14.6755’N / 088° 27.5965’W



KATW BRILLION ARRIVAL

OBSTACLES WITHIN 1NM OF ROUTE



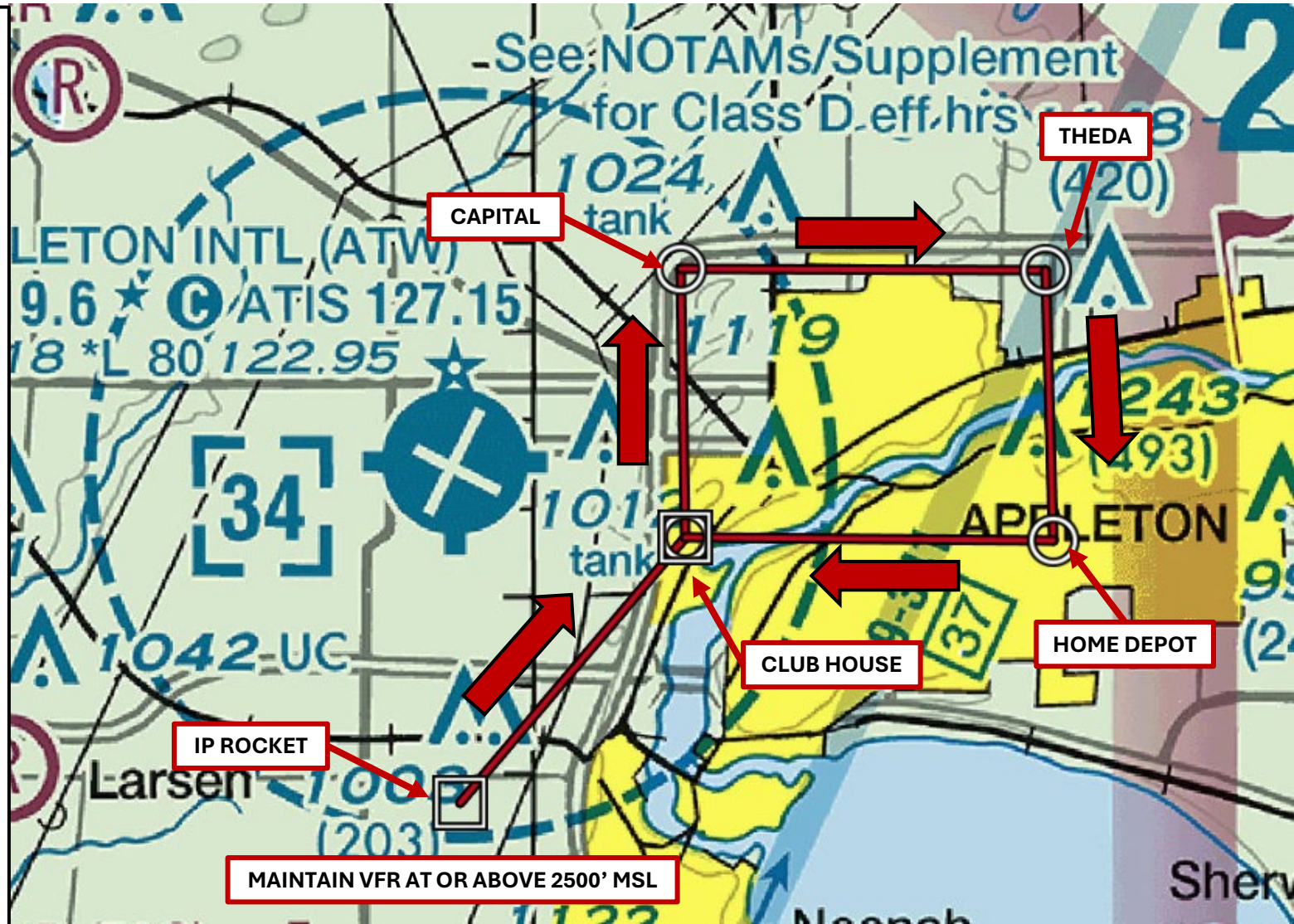
KATW VFR HOLDING PATTERN

HOLDING INSTRUCTIONS

VFR HOLDING PATTERN

1. From **ROCKET** maintain VFR at or above 2500' MSL and fly suggested heading 045 for approximately 4 NM to **CLUB HOUSE**.
2. At **CLUB HOUSE** fly suggested heading 360 for approximately 3 NM to the I-41 and Capital Drive ("**CAPTIAL**") overpass intersection.
3. At **CAPITAL** fly suggested heading 095 for approximately 4.1 NM to the ThedaCare Clinic ("**THEDA**"). This will be just before a 4-Lane North/South HWY (HWY 441).
4. At **THEDA** fly suggested heading 180 for approximately 3.1 NM to the HWY 441 and Calumet St intersection ("**HOME DEPOT**").
5. Report **HOME DEPOT**. Tower will inform you whether to expect to continue hold or to expect landing clearance at CLUB HOUSE.
6. At **HOME DEPOT** fly suggested heading 275 for approximately 4.2 NM to CLUB HOUSE.
7. Report **CLUB HOUSE** and await instructions/clearance from Tower. If landing clearance is given at CLUB HOUSE enter a right dogleg to final RWY 30.

Listen carefully for follow-up instructions from ATW Tower at all times.



KATW VFR HOLDING PATTERN

POINT LAT/LONG & HEADINGS

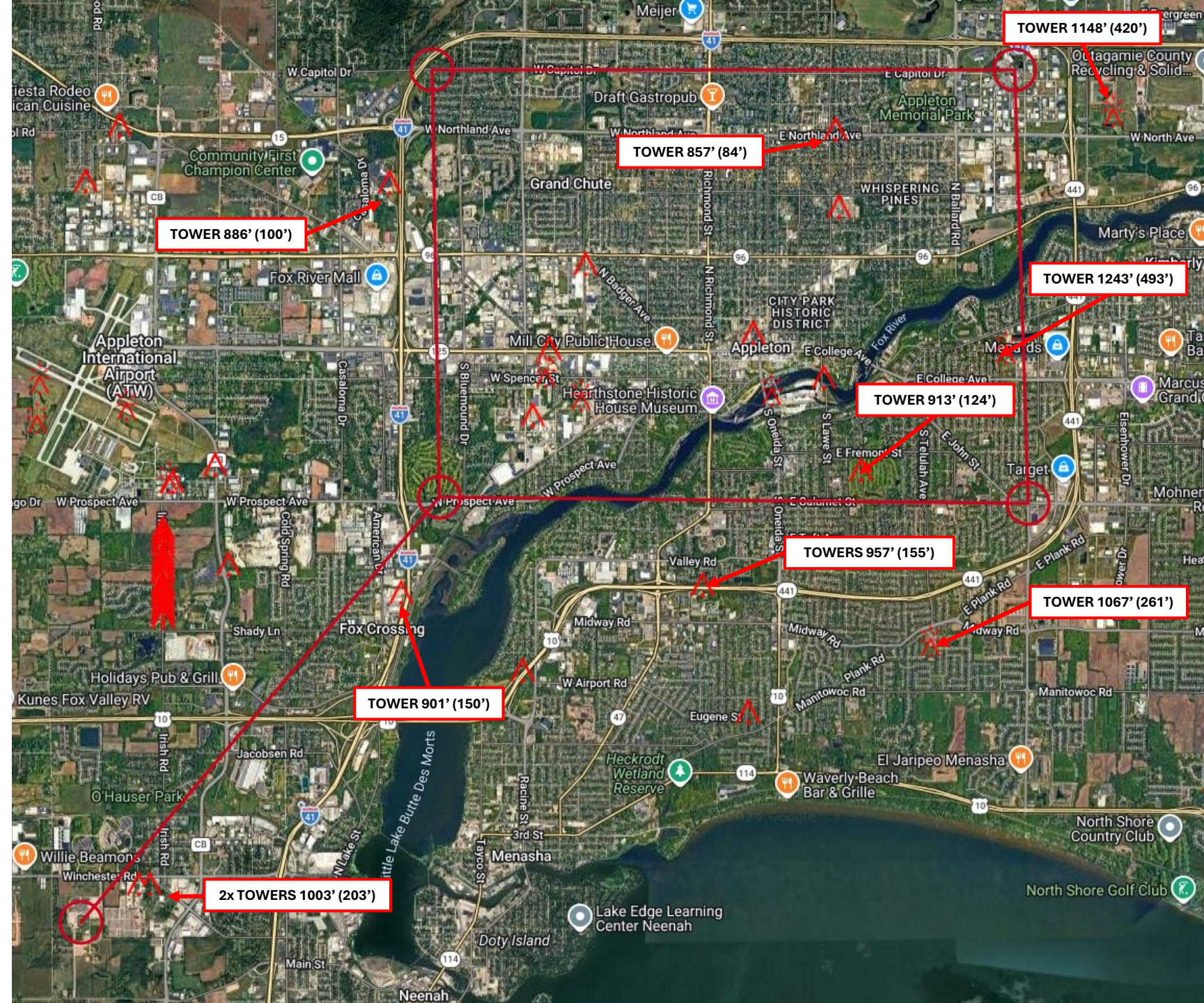
VFR HOLDING PATTERN POINTS

- INITIAL POINT – NHS Rocket Field (“ROCKET”)
 - LAT/LONG: 44° 24.1770’N / 088° 442072’W
 - HEADING 045° to VHP 2
- VHP 2 – Golf Course Club House (“CLUB HOUSE”)
 - LAT/LONG: 44° 14.6755’N / 088° 27.5965’W
 - HEADING 360° to VHP 3
- VHP 3 – I-41 / Capital Drive (“CAPTIAL”)
 - LAT/LONG: 44° 17.7006’N / 088° 27.6707’W
 - HEADING 095° to VHP 4
- VHP 4 – I-41 / ThedaCare Clinic (“THEDA”)
 - LAT/LONG: 44° 17.6989’N / 088° 21.9201’W
 - HEADING 180° to VHP 5
- VHP 5 – HWY 441 / Calumet (“Home Depot”)
 - LAT/LONG: 44° 14.6344’N / 088° 21.7868’W
 - HEADING 275° to RP Club House
- RELEASE POINT – Golf Course Club House
 - LAT/LONG: 44° 14.1765’N / 088° 29.1342’W

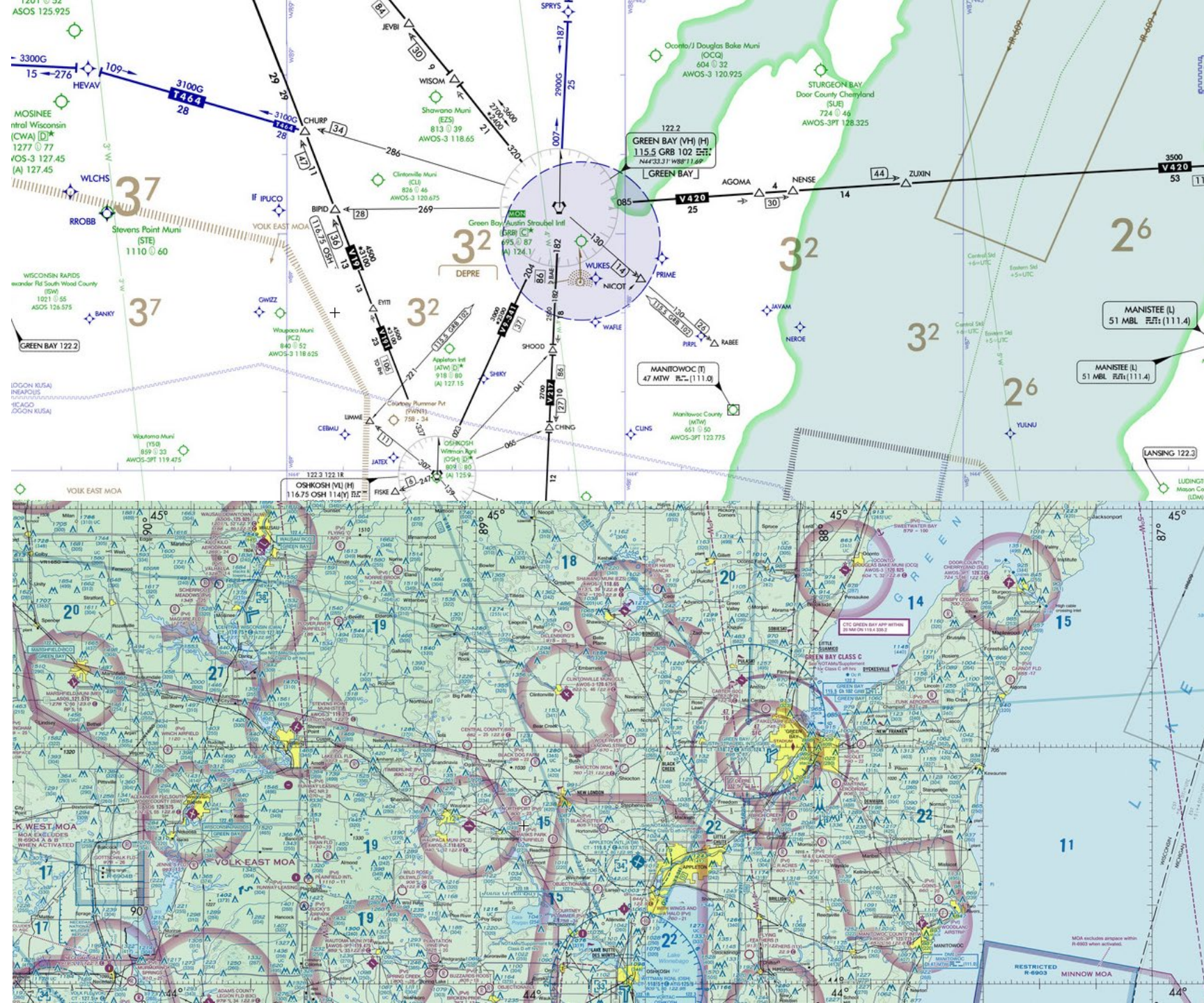


KATW VFR HOLDING PATTERN

OBSTACLES WITHIN 1NM OF ROUTE



KATW EAA IFR AND VFR DEPARTURE PROCEDURES



ATW IFR DEPARTURE PROCEDURES

SEE EAA NOTAM BOOK PAGE 25 FOR IFR PREFERENTIAL ROUTING

RUNWAY 21 AND 30

When ATW is advertising RWYs 21 and 30 in use:

1. ALL IFR departures West, Southwest, and Southeast **WILL** depart RWY 21.
2. All IFR departures North, Northwest, Northeast and East **WILL** depart RWY 30.

ANY AIRCRAFT THAT CANNOT DEPART RWY 30 TO THE N, NW, NE, AND E MAY EXPERIENCE A DELAY FROM SEVERAL MINUTES TO SEVERAL HOURS BASED ON VOLUME. PLEASE PLAN ACCORDINGLY.

RWY 03 AND 30

When ATW is advertising RWYs 03 and 30 in use:

1. ALL IFR departures West, Southwest, and Southeast **WILL** depart RWY 30.
2. All IFR departures North, East, Northeast, Northwest **WILL** depart RWY 03.

ANY AIRCRAFT THAT CANNOT DEPART RWY 30 TO THE W, SW, AND SE MAY EXPERIENCE A DELAY FROM SEVERAL MINUTES TO SEVERAL HOURS BASED ON VOLUME. PLEASE PLAN ACCORDINGLY.

ATW VFR DEPARTURE PROCEDURES

PILOTS THAT ELECT TO DEPART VFR WITH AN IFR FLIGHT PLAN ON FILE:

- You will not be able to pick up an IFR clearance in the air within 150 NM of KATW. If you plan on picking up your IFR flight plan outside the 150 NM, you will have to air file a new flight plan. Your old flight plan may not be available in a new sector.
- Pilots that pick up an IFR flight plan clearance from KATW that elect to go VFR, ensure to reset transponder to 1200.

VFR DEPARTURE PROCEDURES

- All VFR departures will be instructed to maintain VFR at or below 2000 and may be assigned a suggested heading for traffic after departure.
- Expect intersection departures off RWY 30 at TWY N3.
- Expect Intersection departures off RWY 21 at TWYs B4 or B5
- Expect intersection departures off RWY 03 at TWYs B2 or B3