



# IMPORTANT AIRPORT INFORMATION

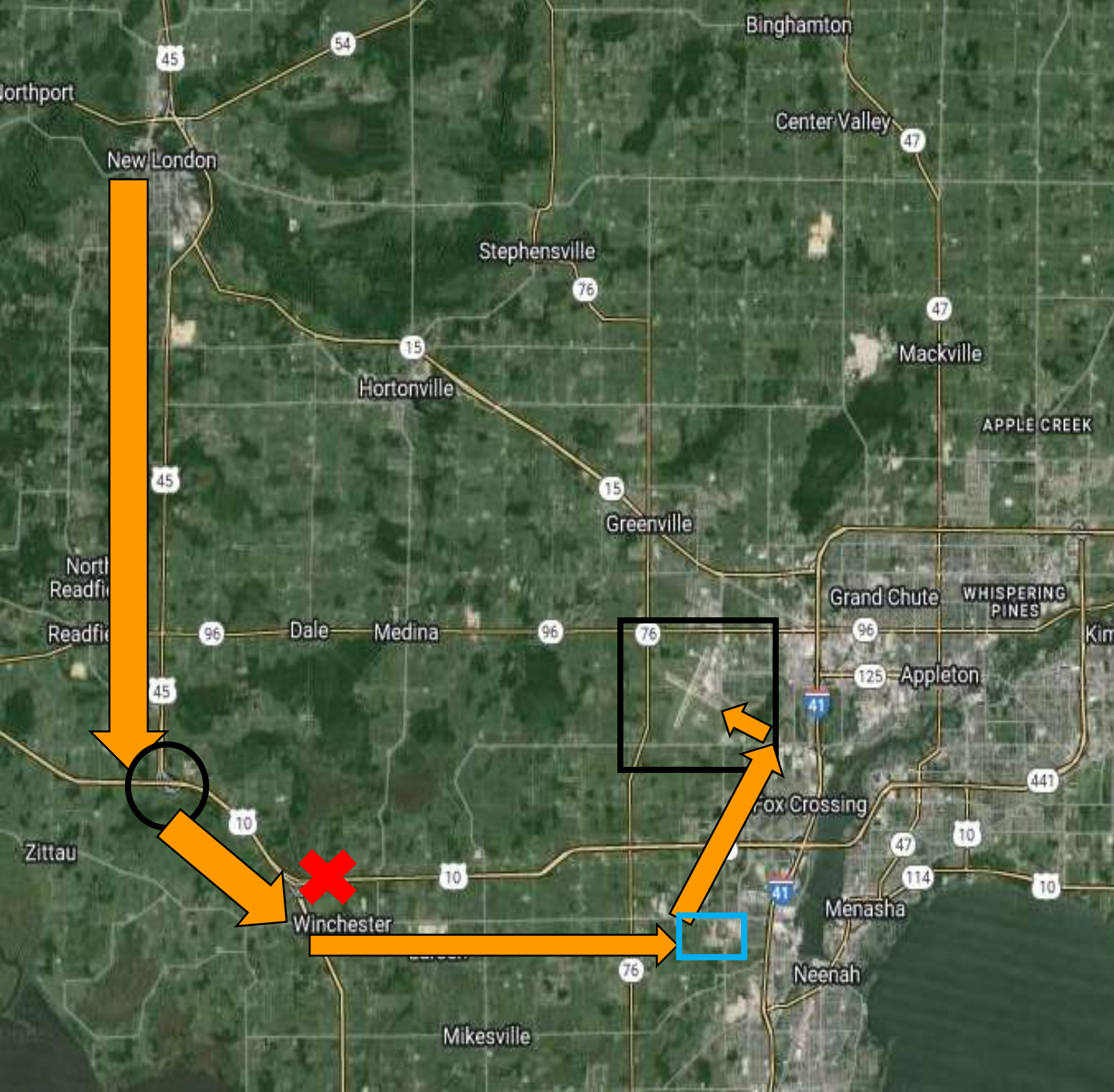
- Appleton may close all VFR arrivals due to volume, traffic, Runway configuration, EAA parking or weather.
- Plan fuel reserves and an alternate airport in the event Appleton closes VFR arrivals.
- Alternate Airports from ATW:
  - GRB Heading 052@ 22NM
  - MTW Heading 104@ 37NM
  - CLI Heading 339@ 23NM
  - CWA Heading 304@ 58NM
  - W34 Heading 355@ 13NM
  - PCZ Heading 284@ 22NM

# VFR EAA PROCEDURES

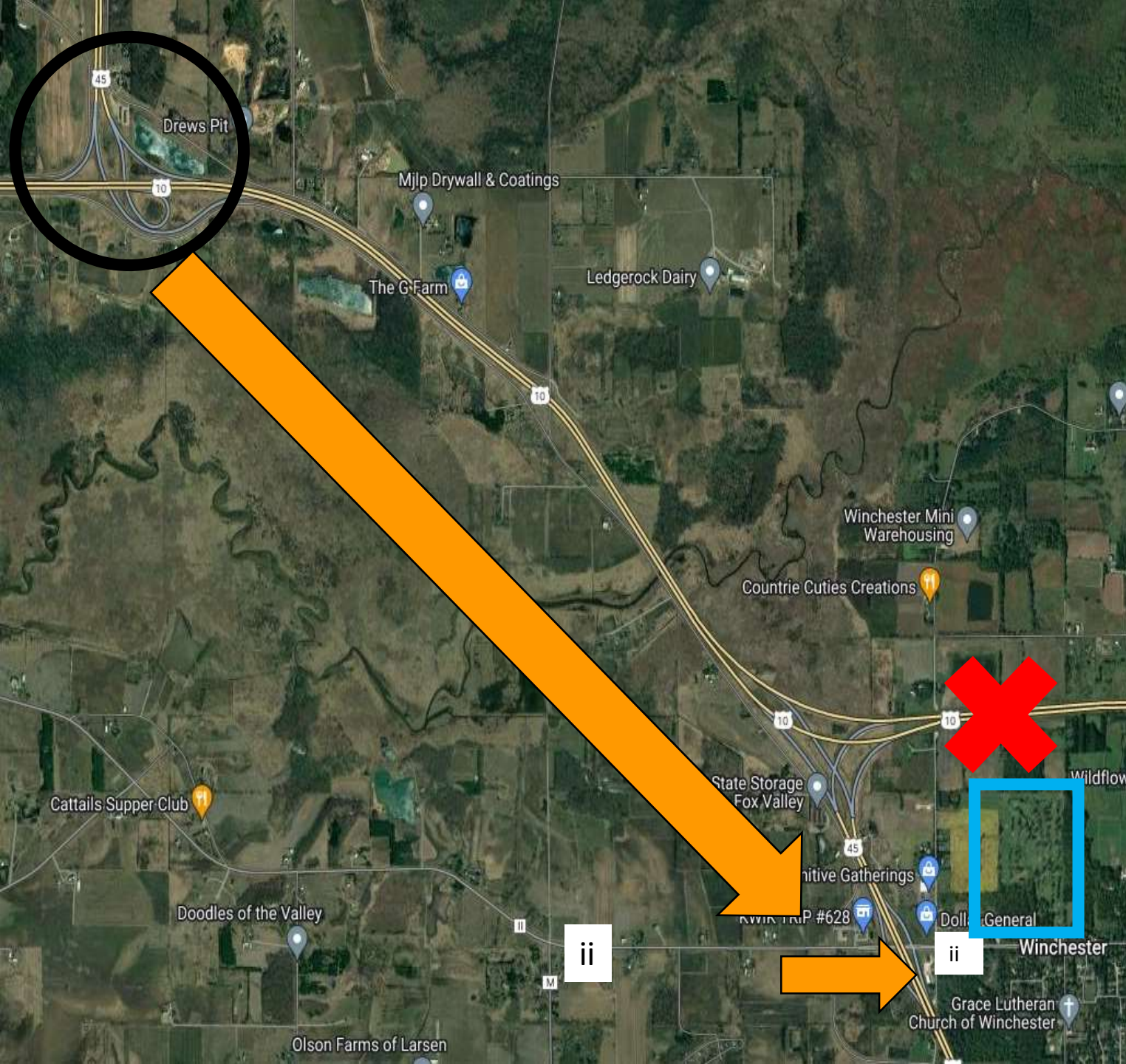
## FROM NEW LONDON

CALL TOWER ON 119.6 AT NEW LONDON

1. FROM NEW LONDON HEAD SOUTH ALONG HIGHWAY 45 TO THE INTERSECTION OF HIGHWAY 45 AND HIGHWAY 10 INDICATED BY THE BLACK CIRCLE.
2. FROM THE INTERSECTION OF HIGHWAY 45/10 HEAD SE, A HEADING 135 FOR 3.5NM (REFER TO SLIDE 2) (DO NOT FOLLOW THE 4 LANE HIGHWAY INDICATED BY THE RED X, SHOULD BE .6 SOUTH OF THAT HIGHWAY FOLLOWING THE 2 LANE ROAD EAST BOUND).
3. REMAIN SOUTH OF WINCHESTER GOLF COURSE HEADING EAST BOUND ON ii ROAD (REFER TO SLIDE 2).
4. FOLLOW ON THE SOUTH SIDE OF ii ROAD EAST BOUND UNTIL YOU REACH NEENAH ROCKETS HIGHSCHOOL FOOTBALL FIELD INDICATED BY THE BLUE SQUARE (REFER TO SLIDE 3).
- 4A. FROM THE NEENAH ROCKETS HIGH SCHOOL/FOOTBALL FIELD FLY NORTHEAST, A HEADING OF 035 FOR APPROXIMATELY 3NM. THIS WILL SET YOU UP ON LEFT BASE FOR RUNWAY 30.
5. EXPECT TO HOLD AT CERTAIN POINTS AND WAIT FOR FURTHER INSTRUCTIONS: INTERSECTION OF HIGHWAY 45/10, WINCHESTER GOLF COURSE AND NEENAH ROCKETS HIGH SCHOOL.



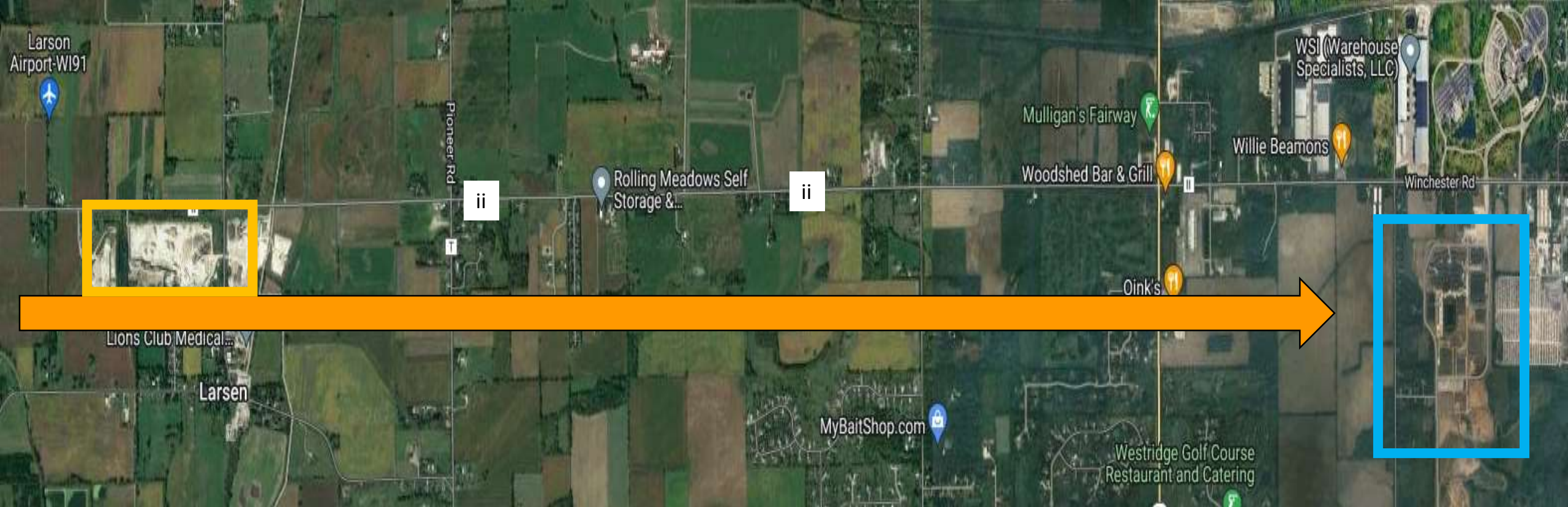




## NEW LONDON ARRIVAL FROM INTERSECTION OF HIGHWAY 45/10

- FROM INTERSECTION HIGHWAY 45 AND HIGHWAY 10 INDICATED IN THE BLACK CIRCLE, FLY SOUTHEAST APPROXIMATE HEADING OF 135 FOR 3.5NM AND JOIN THE 2 LANE ROAD (ii) EAST BOUND.
- YOU SHOULD BE FLYING OVER THE TOWN OF WINCHESTER AND REMAIN SOUTH OF WINCHESTER GOLF COURSE EAST BOUND INDICATED IN THE BLUE BOX.
- DO NOT OVERFLY HIGHWAY 10 INDICATED WITH THE RED X, YOU SHOULD BE APPROXIMATELY .6 NM SOUTH (**VFR ALTITUDE RESTRICTION?**)
- EXPECT TO HOLD AT THE INTERSECTION OF HIGHWAY 45/10 INTERSECTION UNTIL FURTHER ADVISE.
- EXPECT TO HOLD AT WINCHESTER GOLF COURSE.





## FROM THE TOWN OF WINCHESTER CONTINUE EAST BOUND ON SOUTH SIDE OF ii ROAD

CONTINUE EAST BOUND ON THE SOUTH SIDE OF ii. YOU SHOULD SEE A QUARRY INDICATED IN THE ORANGE BOX. CONTINUE EAST BOUND ON ii ROAD UNTIL YOU SEE NEENAH ROCKETS HIGH SCHOOL AND FOOTBALL FIELD INDICATED IN THE BLUE SQUARE. FLY NORTHEAST HEADING OF 035 FOR APPROXIMATELY 3NM AND THIS WILL SET YOU UP ON LEFT BASE FOR RUNWAY 30. REPORT TO APPLETON TOWER OVER THE HIGH SCHOOL. EXPECT TO HOLD OVER NEENAH HIGH SCHOOL.

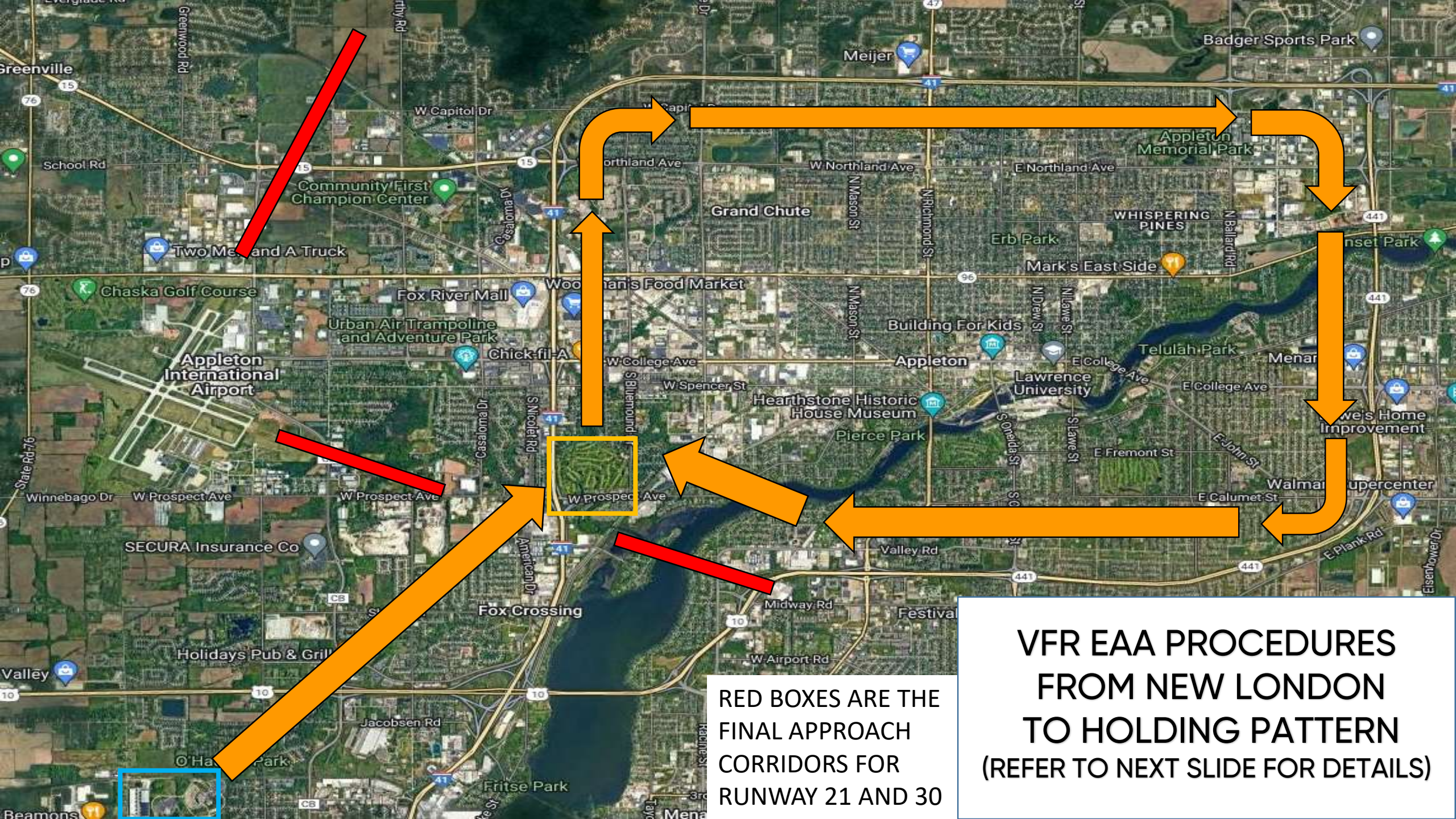




# NEW LONDON VFR ARRIVAL FROM NEENAH HIGHSCHOOL

- FROM THE NEENAH ROCKETS HIGH SCHOOL INDICATED IN THE BLUE BOX CONTACT TOWER FOR SEQUENCE.
- DURING PERIODS OF SLOWER TRAFFIC YOU CAN EXPECT TO TURN A LEFT BASE AROUND THE QUARRY INDICATED IN THE ORANGE BOX.





RED BOXES ARE THE  
FINAL APPROACH  
CORRIDORS FOR  
RUNWAY 21 AND 30

VFR EAA PROCEDURES  
FROM NEW LONDON  
TO HOLDING PATTERN  
(REFER TO NEXT SLIDE FOR DETAILS)

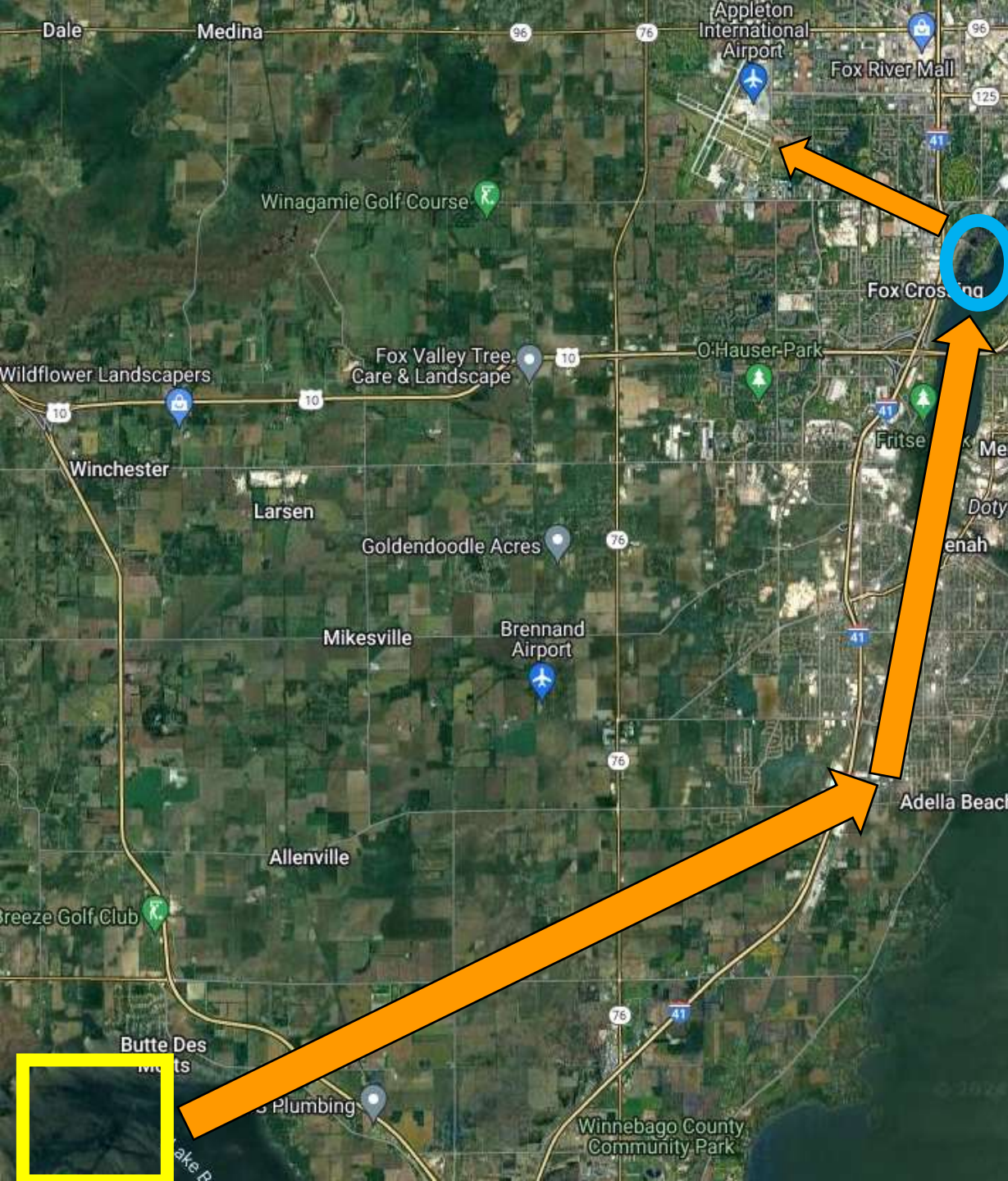


# VFR EAA HOLDING PATTERN

- FROM THE NEENAH HIGH SCHOOL (**MAINTAIN VFR ALTITUDE?**) AND FLY NORTHEAST HEADING OF 040 TO APPROXIMATELY 4NM TO THE BUTTE DES MORTS GOLF COURSE INDICATED IN THE ORANGE BOX.
- REMAIN INSIDE OF HIGHWAYS 41 AND HIGHWAY 441.
- AT THE TOP LEFT OF THE MAP, THERE WILL BE TRAFFIC INBOUND FOR RUNWAY 21 APPROXIMATELY 1.25NM WEST/NORTHWEST OF HIGHWAY 41.
- AT THE BOTTOM OF THE MAP ABEAM HIGHWAY 441 INDICATED WITH A RED SQUARE WILL BE APPROXIMATELY A 3 MILE FINAL FOR RUNWAY 30.



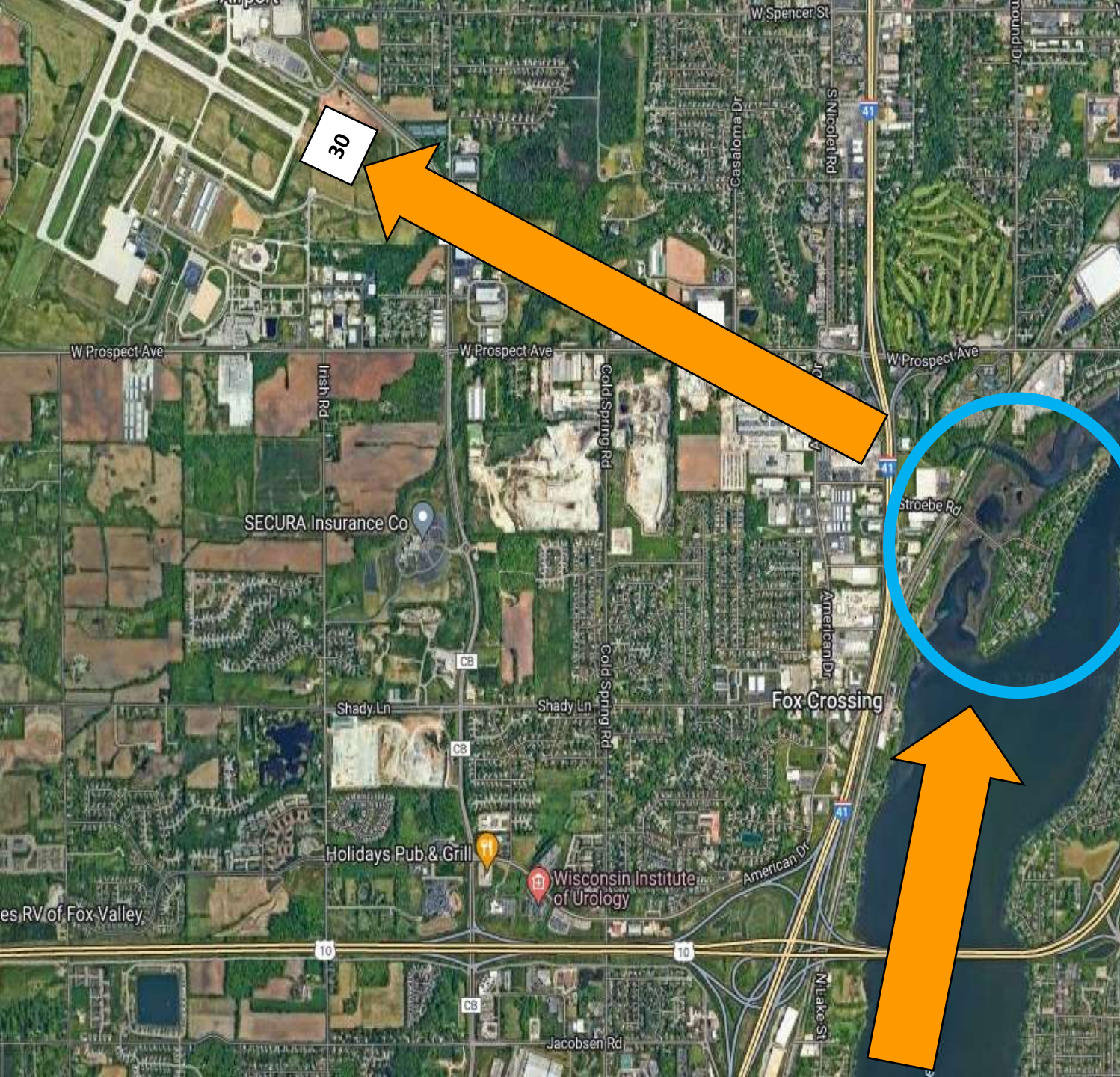




# VFR EAA PROCEDURES FROM LAKE BUTTE DES MORTS

1. FROM LAKE BUTTE DES MORTS SUGGESTED HEADING OF 070 TO APPROXIMATELY 8.8NM UNTIL YOU REACH THE EAST SIDE OF HIGHWAY 41.
2. FROM ADELLA BEACH FLY A SUGGESTED HEADING OF 010 HEADING FOR APPROXIMATELY 5.2 NM UNTIL YOU REACH STROEBE ISLAND INDICATED IN THE BLUE CIRCLE ALSO REFER TO SLIDE 7 FROM STROEBE ISLAND. (FROM STROEBE ISLAND TOWER WILL ADVISE YOU TO PROCEED INBOUND FOR LANDING ON A LEFT BASE/STRAIGHT IN FOR RUNWAY 30)





# VFR EAA PROCEDURES FROM LAKE BUTTE DES MORTS

1 MILE SOUTH OF STROEBE ISLAND  
INDICATED IN THE BLUE CIRCLE CALL  
TOWER AND DEPENDING ON TRAFFIC  
TOWER WILL BRING YOU IN A STRAIGHT  
IN OR LEFT BASE FOR RUNWAY 30  
INDICATED WITH THE WHITE BOX.



# VFR EAA HOLDING PATTERN

- FROM THE STROEBE ISLAND INDICATED IN THE BLUE CIRCLE AND FLY NORTH TO THE BUTTE DES MORTS GOLF COURSE INDICATED IN THE ORANGE SQUARE. **(MAINTAIN VFR ALTITUDE?)**
- REMAIN INSIDE OF HIGHWAYS 41 AND HIGHWAY 441.
- AT THE TOP LEFT OF THE MAP THERE WILL BE TRAFFIC INBOUND FOR RUNWAY 21 APPROXIMATELY 1.25NM WEST OF HIGHWAY 41.
- AT THE BOTTOM OF THE MAP ABEAM HIGHWAY 441 INDICATED WITH A RED SQUARE WILL BE APPROXIMATELY A 3 MILE FINAL FOR RUNWAY 30.







# RWY 30 LAND AND HOLD SHORT OPERATIONS

- LANDING RUNWAY 30 3400' REMAINING
- OTHER AVAILABLE EXITS: 1801' AT N3 FOR EAA PARKING AND A3 FOR CUSTOMS.
- EXPECT A LEFT TURN OFF THE RUNWAY FOR EAA PARKING UNLESS YOU ADVISE THE TOWER THAT YOU REQUIRE CUSTOMS. (EAA PARKING FREQUENCY 129.05)
- ALL INTERNATIONAL ARRIVALS WILL MAKE A RIGHT TURN OFF OF RUNWAY 30 FOR CUSTOMS.

## LEGEND

- YELLOW BOX: ATW FLIGHT CENTER
- RED BOX: CUSTOMS
- BLUE BOX: EAA PARKING